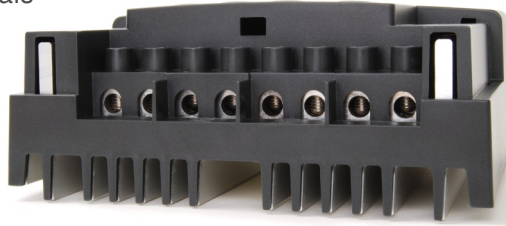


Connection terminals



FOX-260 Lithium



Backside



Solar charge regulator FOX-260 Lithium

Comfortable handling, ease of installation and manifold display features are characteristics of the charge regulator FOX-260 Lithium with integrated graphical display. Only quality components with automotive admission and extended temperature range are used.

Product characteristics

- **Solar charge regulator for lithium batteries**
- Overcharge protection 20A is equal to solar modules of 340 Watt 12V (680W @ 24V)
- Discharge protection or night light function adjustable (max. 20A)
- Shut-off threshold via menu adjustable
- System voltage 12V or 24V (automatically)
- Display with backlight (30sec)

The charge regulator FOX-260 Lithium is designed for 20A module current.

The graphical backlit LCD display with very legible lettering shows the actual informations:

- Battery voltage(s) [V]
- charging current [A], - module generated power [A]
- power consumption [A]
- battery charge conditions as bar chart.

For the adjustment of basic settings such as selection of a battery type, various input screens are available.

The optimized loading characteristic achieved in combination with the Hardware PWM-control ensure significantly rapid and gentle charging of the battery. Overcharging are safely prevented. The size of the heat sink is also dimensioned for high environmental temperatures.

| | FOX-260 Lithium |
|------------------------------|---|
| Charge of | 1 battery bank |
| Batterietyp | LiFe(Y)PO4 |
| Fuses to B1 | 1x25A, soldered internally |
| System voltage | 12V/24V, automatic detection, |
| - Detection 12V | $U_{\text{battery 1}}$: 6V ... 17V => 12V system |
| - Detection 24V | $U_{\text{battery 1}}$: larger 17V => 24V system |
| System operating voltage | 8,5V ... 35V |
| Temp. compensation | -20mV/°K @12V, -40mV/°K @24V |
| PWM frequency | 244Hz |
| Max terminal voltage | 50V (open circuit voltage of the modules, Uoc) |
| Discharge protection | max. 20A at 25°C |
| - Shut-off threshold | standard 10,5V, via menu adjustable |
| - Switch-on/switch-off delay | 60 seconds |
| Nightlight function | max. 20A at 25°C |
| - Switch on/switch off | no charge current of the module/ charge current present |
| - Shut-off threshold | standard 11,25V, via menu adjustable |
| - Time delay | 10 minutes |
| Display | backlit graphic LCD, 30 sec., 128x64 pixel |
| Terminals | 6 VA screws, max. 16mm ² |
| Power requirement | 7,0mA (with backlight 18,0mA, 30sec.) |
| Voltage drop | 0,0 ... 0,27V (between 0 ... 20A) |
| Environmental conditions | -25°C ... +50°C, non-thawing, IP 22 |
| Storing conditions | -25°C ... +80°C |
| Weight | 300g |
| Dimensions | 128,6 x 106,7 x 53,5mm (LxWxH) |

Technical changes reserved. State 12/2020



RANGE OF APPLICATIONS

- For motor boats and sailing yachts
- For camping and caravan
- For mobile current supply
- For industry, shipping and building sector



DIMENSIONS

